

## SL EVOLVE 4-2

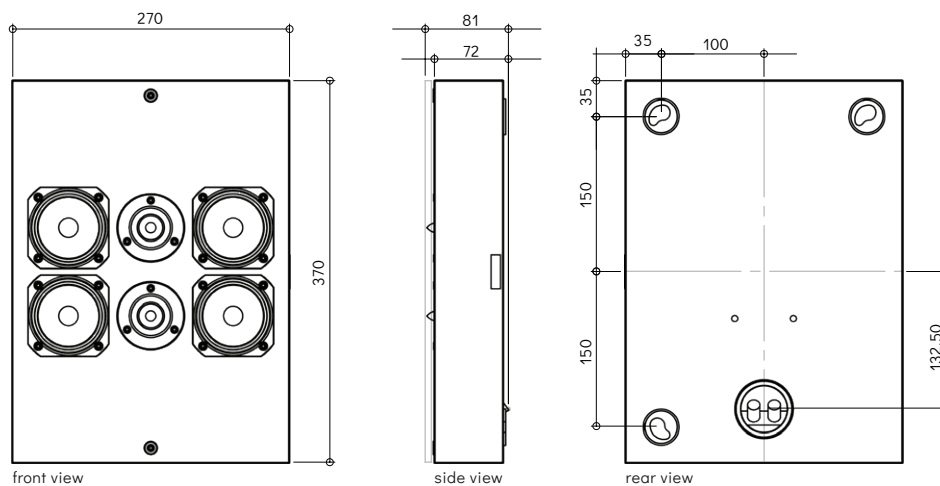
The SL Evolve Series is Artcoustic's most versatile range of products. Its slimline profile, combined with a powerful and articulated performance, makes it the ideal choice for high-end cinema, Hi-Fi and, multi-room audio installations.



Operating Range: 60 Hz (-3 dB) to 40 kHz  
 Sensitivity: 96 dB  
 Maximum Power Handling: 120 Watt  
 Impedance: 4 ohms nominal  
 Average Peak SPL: 116 dB  
 Weight: 4.2 kg  
 Dimensions: H: 370 W: 270 D: 72 mm  
 Cabinet: Black, White, RAL, NCS  
 Screen: Black, White, RAL, NCS, Artcoustic Art Gallery

## SCHEMATICS

dimensions are in mm



## POLAR RESPONSE

horizontal polar response 2m

16000Hz - - - - -  
 6500Hz - - - - -  
 2500Hz - - - - -  
 1000Hz - - - - -

vertical polar response 2m

3D polar response 2m

