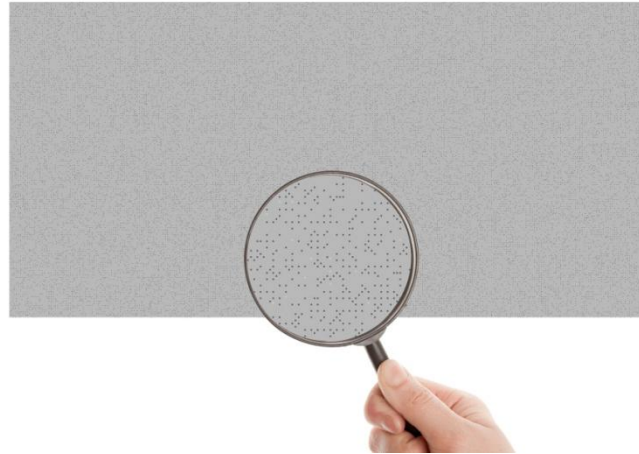


LEA-1202

ACOUSTIC PANELS

1190 x 595 x 20mm PET Absorbent



PRODUCT OVERVIEW

LEA (Lightweight Ecological Absorbent) is an acoustic panel made of recycled material (PET) with a high absorption performance in medium and high frequencies. Its acoustic properties ensure a significant reduction of the room reverberation time that reflects to a better acoustic comfort. LEA panels can be installed in a false ceiling or attached to the wall with included Velcro® stripes. This acoustic panels can be managed easily without tools and cleaned up whenever is needed.

KEY FEATURES

- High absorption on medium and high frequencies
- Lightweight
- Easy and quick installation (accessories included)
- Ecologic product: +65% of the built material coming from recycled plastic bottles (PET)
- Safety manipulation: VOC French A+ Class classification according to ISO16000 certification. Low emission level of harmful/toxic substances
- Classified as Class 1 of least harmful level in terms of skin contact according to STANDARD 100 by OEKO-TEX®
- Easy to clean and cut product

APPLICATIONS

- Restaurants
- Classrooms
- Meeting rooms
- Offices
- Public spaces

CERTIFICATIONS

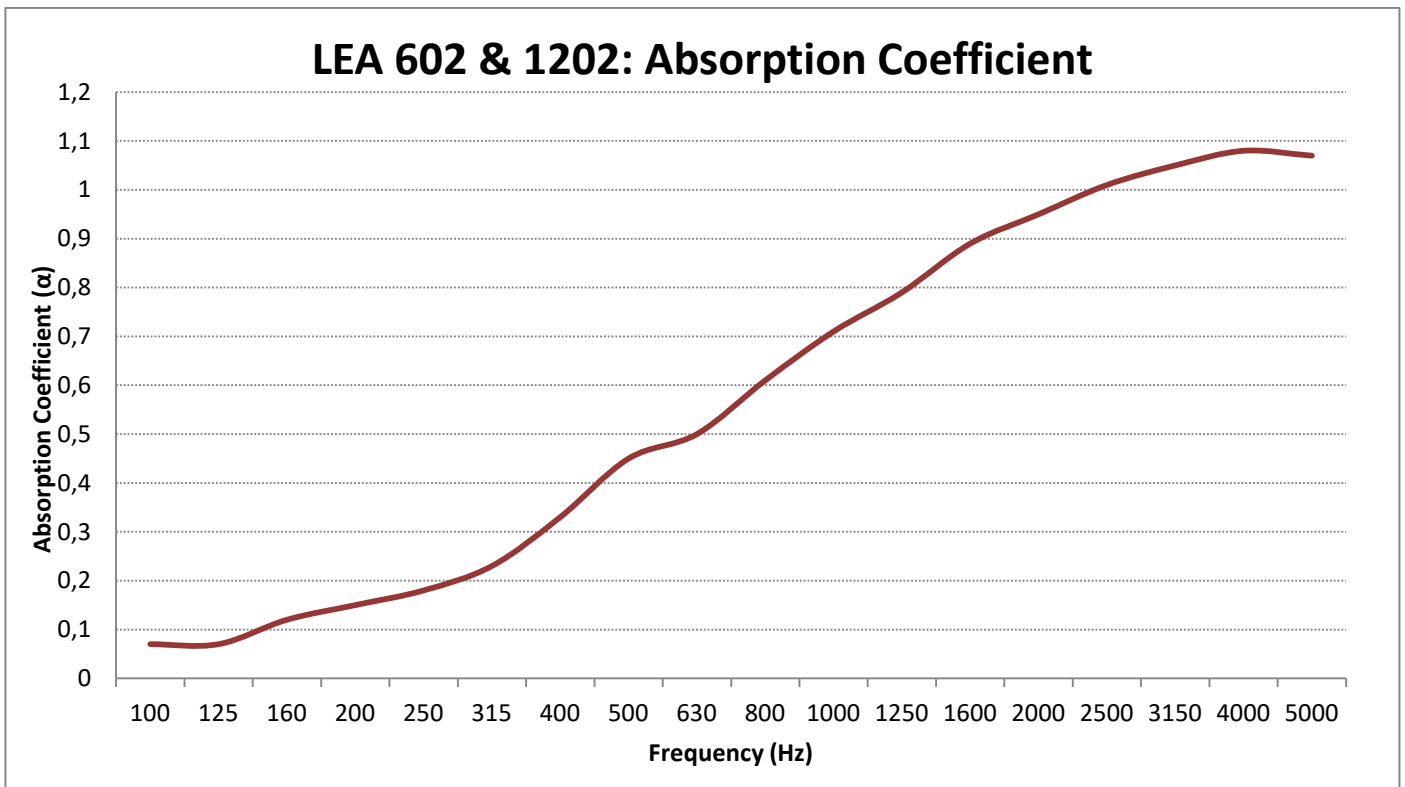
- B-s2, d0 reaction to fire classification according to EN13501-1 (Europe)
- Class A according to ASTM-E84 (USA)

TECHNICAL SPECIFICATIONS

LEA-1202

Absorption performance	Medium and high frequencies
NRC	0,55
Material	PET
Fire Class	EU: Euroclass B-s2, d0 USA: Class A (ASTM-E84) CAN: ULCS102, Flame Spread Rating: 5, Smoke Develop: Class115
Emission level of harmful/toxic substances	VOC French A+ Class (ISO16000)
Skin contact harmful levels	Class 1 (STANDARD 100 by OEKO-TEX®)
Product finish	Points of View Collection
Fixing system	Velcro strips
Units per box	8 units
Dimensions	1190 x 595 x 20mm / 46.8" x 23.4" x 0.8"
Density	80 kg/m3
Weight / unit area	1600 g/m2

ACOUSTIC ABSORPTION COEFFICIENT





All product characteristics are subject to variation due to production tolerances. **NEEC AUDIO BARCELONA S.L.** reserves the right to make changes or improvements in the design or manufacturing that may affect these product specifications.

Motors, 166-168 08038 Barcelona - Spain - (+34) 932238403 | information@ecler.com | www.ecler.com