

 **MONITOR AUDIO**[®]
design for sound

Trimless series



Trimless series

Blending precision engineering with excellent technological and design innovation, the five-strong Trimless series of architectural speakers has been created to raise the level of audio and installation performance in the luxury custom hi-fi and home theatre market.

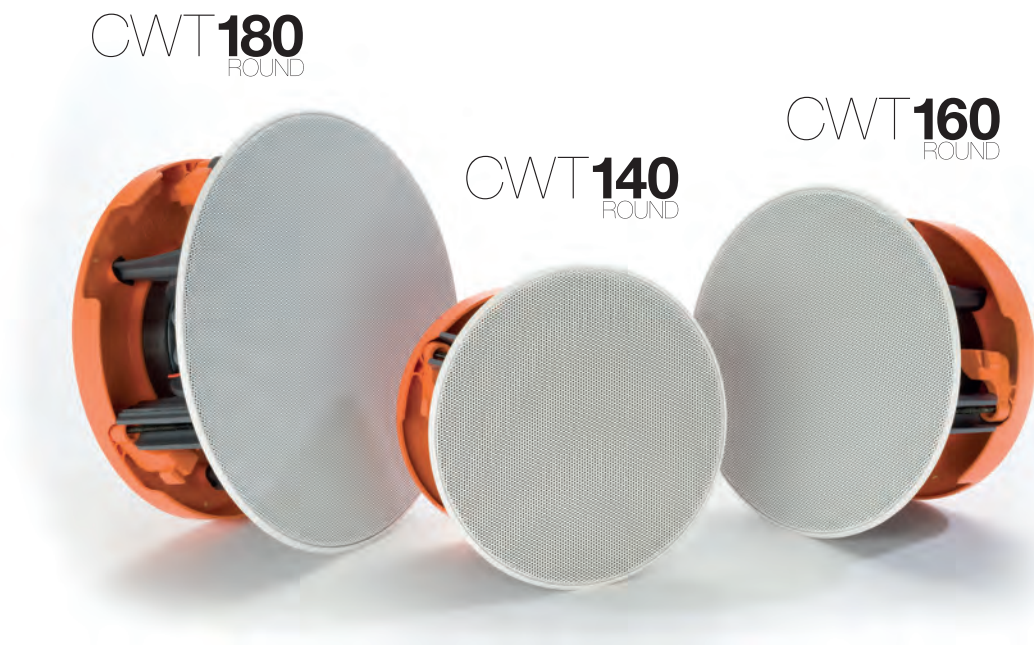
Featuring versatile installation options for both in-ceiling and in-wall applications, the new Trimless range offers exceptional audio performance in a near invisible easy-to-install format. Behind super-discreet trimless grilles, acoustic systems of Monitor Audio's trademark bass drivers and pivoting C-CAM® gold dome tweeters have been optimised by FEA analysis to deliver high efficiency combined with a broad frequency response for a wide range of demanding residential and commercial installations.

Having a physical depth of less than 10cm (4"), the five Trimless models are perfect for easy installation in many more locations, being ideal for standard stud walls and where depth is restricted. What's more, by integrating the bass driver basket with the frame, our engineers have reduced overall speaker size by 25% over conventional speakers without any performance penalty. All Trimless models incorporate Monitor Audio's innovative, robust and reliable Tri-Grip® fixing design: a secure 'dog' style fixing with three contact points.

Wherever Monitor Audio's Trimless speakers are installed, their innate versatility, 'stealthy' trimless appearance and high performance will deliver great sound and easy, discreet, décor-friendly installation.



Trimless In-Ceiling & In-Wall



The two-way in-ceiling/wall models in 4, 6 and 8-inch driver sizes feature Monitor Audio's proprietary MMP®II cones coupled with a pivoting version of our acclaimed C-CAM® gold dome tweeter. Benefitting from recent design refinements and with 15 degrees of play in all directions, the tweeter's higher resolution output can be directed for ideal imaging and reduced in-room reflections. Between the drivers, a simple crossover design of high grade audiophile components ensures a smooth transition from dynamic rhythmic lows to finely detailed highs, completing a naturally clean and wide response. A choice of round or square trimless grilles offers the finest blend with décor; please specify the grille option when ordering.





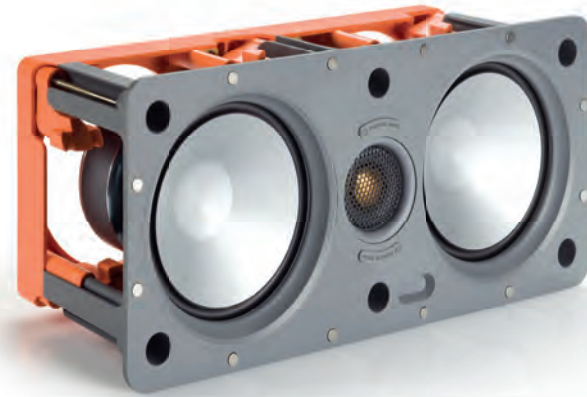


MONITOR AUDIO

MONITOR AUDIO

Trimless LCR

WT**150-LCR**



WT**250-LCR**

By virtue of their rectangular shape, the LCR in-wall models can be used vertically in portrait style or horizontally: the ideal aspect for centre-channel applications in ultra-discreet Trimless home theatre systems. Two LCR models are offered at different specification levels. WT150-LCR uses 5" MMP®II bass drivers on either side of the C-CAM® tweeter; the WT250-LCR uses advanced C-CAM metal cones for exceptional mid-range accuracy. This model also provides high frequency level adjustment for super-fine audio tuning in acoustically bright or damped rooms.



Finishing Touch



Trimless grilles are held in place magnetically by high power Neodymium magnets. A choice of interchangeable round or square grilles is offered by the in-ceiling/wall models, and for the perfect blend with any environment, all grilles are paintable: additional scrim material is provided.

Trimless models use fire retardant materials specified to U.L rating, are splash and humidity proof, and feature dust protection covers that are designed to prevent the ingress of loose building materials or dust into the driver and crossover network.

When ordering, please specify a round or square grille option.

A close-up photograph of a black speaker grille. The grille features a pattern of circular perforations. A curved silver-colored metal strip is attached to the top edge of the grille. On this strip, the Monitor Audio logo (the Greek letters Ω and Ω) is embossed on the left, and the words "MONITOR AUDIO" are embossed in a sans-serif font on the right. The background is dark, and the lighting highlights the texture of the grille and the metallic finish of the strip.

 MONITOR AUDIO

Featured Technologies



C-CAM®

C-CAM (Ceramic-Coated Aluminium Magnesium) is an innovative alloy originally created by the aerospace industry for low mass and extreme rigidity in the development of jet engine blades. Monitor Audio's C-CAM drivers are shaped in a two stage high pressure forming process. Once the C-CAM cone is formed, a layer of pure ceramic (alumina) is deposited on its surface to give a completely rigid construction. C-CAM delivers a lightning-fast response for incredible clarity and offers extreme rigidity for low distortion.



MMP®II

MMP II (Metal Matrix Polymer) driver cones have a polypropylene base, loaded with metallic particles for a rigid and responsive radiating surface. A high pressure, injection-moulded process achieves a different cone thickness at critical points in the cone's geometry to optimise stiffness and consistency, resulting in a superior audio performance.



Tri-Grip®

All models feature a unique Tri-Grip fixing design. This 'dog' style fixing provides a greater contact surface area than other types. The Tri-Grip fixings are made from a tough re-enforced polymer, giving a secure fixing without the risk of over-tightening.



Magnetic Grille Fixing

Ultra-powerful Neodymium magnets hold the speaker grilles in place, allowing for easier installation and access. In-ceiling models offer the opportunity to use square and circular grilles for the ideal aesthetic result.

Features Overview

ALL MODELS

- Trimless design – unobtrusive frame and low profile grille for discreet installation
- Super-slim – all models have a mounting depth of less than 10cm (4”) for easy installation in many more locations
- Tri-Grip fixing® – for easy, secure installation
- MMP®II – Monitor Audio’s advanced bass/mid driver cone technology
- C-CAM® – Monitor Audio’s distinctive and renowned gold dome tweeter with up to 15 degrees of pivot in all directions
- Magnetic grille fixing – grilles are held in place by ultra-powerful Neodymium magnets for easy installation and servicing
- Paintable grilles allow for seamless integration with décor. Additional scrim material is provided to facilitate trouble-free painting
- All models use fire retardant materials specified to UL94-V0 rating
- All models are splash and humidity proof
- All models feature dust protection covers
- Dedicated pre-construction (rough-in kits) brackets available.

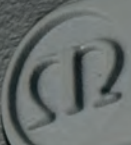
LCR MODELS

- Versatile – designed to fit horizontally or vertically between standard wall studs for consistent performance when used around the room in multi-channel surround applications
- Ultra-compact – small speaker, big performance
- Dual 5” drivers in a D’Appolito array provide high power handling and high efficiency
- High frequency level adjustment for localised fine-tuning (WT250-LCR).

IN-CEILING & IN-WALL MODELS

- Three driver sizes – 4”, 6” and 8”
- Versatile – 10cm (4”) depth. Round or square grille options
- Compact – typically 25% smaller than other similarly specified designs.

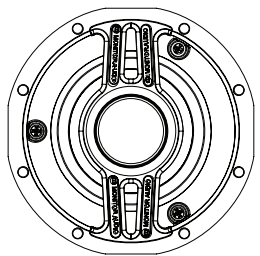
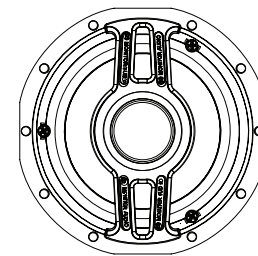
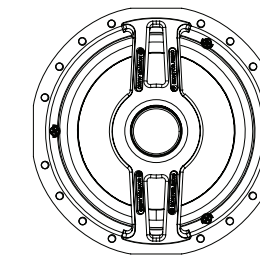


 MONITOR AUDIO





Trimless In-Ceiling & In-Wall Specifications

CWT140	CWT160	CWT180
		

Frequency Response	75Hz - 30kHz	60Hz - 30kHz	48Hz - 30kHz
Impedance (nominal)	6 ohms		
Sensitivity (1W@1m)	85dB	88dB	90dB
Maximum SPL (single unit in free space)	102.8 dBA	107.2 dBA	110.6 dBA
Power Handling (R.M.S)	50 W	70 W	120 W
Recommended Amp Requirements	10 - 50 W	15 - 70 W	30 - 120 W
Drive Unit Complement	1 x 4" MMP®II cone bass driver. 1 x 1" (25mm) C-CAM® pivoting gold dome tweeter	1 x 6" MMP®II cone bass driver. 1 x 1" (25mm) C-CAM pivoting gold dome tweeter	1 x 8" MMP®II cone bass driver. 1 x 1" (25mm) C-CAM pivoting gold dome tweeter
Acoustic Configuration	2 Way		
Overall Size	Round: 180.2mm (7 1/8") Square: 176.7 x 176.7mm (6 15/16 x 6 15/16")	Round: 204.2mm (8 1/16") Square: 199.2 x 199.2mm (7 13/16 x 7 13/16")	Round: 251.7mm (9 15/16") Square: 246.7 x 246.7mm (9 11/16 x 9 11/16")
Mounting Depth	98.6mm (3 7/8")	99mm (3 7/8")	99.4mm (3 15/16")
Cut-out Hole Diameter	149mm (5 7/8")	170mm (6 11/16")	213mm (8 3/8")
Fixing Type	3 position <i>Tri-Grip</i> ® dog fixings		
Cable Connection	Gold plated 'push' type terminals		
Grille Attachment	Magnetic		
Construction Material	Mineral filled ABS (UL94-V0 rated, RoHS compliant)		
Weight	1.18kg (2.6lb)	2.10kg (4.6lb)	2.72kg (6lb)
Pre-Construction Bracket	CB4 (Pink)	CB5 (Blue)	CB6 (Purple)

* Please specify between a Round or a Square grille option when ordering

CB4 pre-construction bracket for CWT140.



CB5 pre-construction bracket for CWT160.

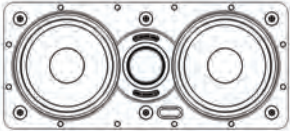
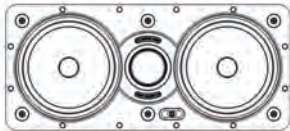


CB6 pre-construction bracket for CWT180.



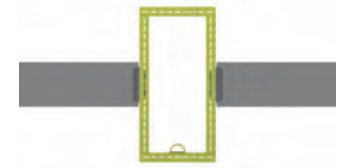


Trimless LCR Specifications

WT150-LCR	WT250-LCR
	

Frequency Response	60Hz - 30kHz	
Impedance (nominal)	8 ohms	
Sensitivity (1W@1M)	88dB	
Maximum SPL (single unit in free space)	108 dBA	
Power Handling (R.M.S)	100 W	
Recommended Amp Requirements	30 - 100 W	
Drive Unit Complement	2 x 5" MMP®II cone bass driver. 1 x 1" (25mm) C-CAM® pivoting gold dome tweeter	2 x 5" C-CAM cone bass driver. 1 x 1" (25mm) C-CAM pivoting gold dome tweeter
Acoustic Configuration	2 Way	
Controls	N/A	+3dB / 0dB / -3dB High frequency level switch
Overall Frame Dimensions	165.8 x 373.6mm (6 1/2 x 14 3/4") - without grille 177.4 x 385.2mm (7 x 15 3/16") - with grille	
Mounting Depth	100.2mm (4")	
Cut-out Hole Dimensions	Minimum 145 x 353mm (5 3/4 x 13 7/8") Required Clearance for Doglegs in Centre Configuration: 400 x 197mm (15 3/4 x 7 3/4")	
Fixing Type	6 position <i>Tri-Grip</i> ® dog fixings	
Cable Connection	Gold plated 'push' type terminals	
Grille Attachment	Magnetic	
Construction Material	Mineral filled ABS (UL94-V0 rated, RoHS compliant)	
Weight	3.76kg (8.3lb)	3.80kg (8.4lb)
Pre-Construction Bracket	WB5 LCR	

WB5 LCR pre-construction bracket for both Trimless LCR models.





Monitor Audio Ltd
24 Brook Road, Rayleigh
Essex, SS6 7XJ
England
Tel: + 44 (0)1268 740580
Fax: + 44 (0)1268 740589
Email: info@monitoraudio.co.uk

monitoraudio.com
Designed in the United Kingdom