

# DesignMax DM8C-SUB

## in-ceiling subwoofer

### Product Overview

DesignMax loudspeakers bring outstanding audio and aesthetics to any commercial space. The 150-watt DesignMax DM8C-SUB subwoofer features an 8-inch woofer and delivers a 42 Hz - 300 Hz frequency range. The DM8C-SUB is ceiling-mounted, installed easily via QuickHold mounting arms. And with both black and white versions available, the DM8C-SUB is easy to integrate with any décor.



### Key Features

**Deliver instantly impressive sound** with custom Bose drivers — no DSP or EQ required. For even better sound, use select Bose DSPs and amplifiers to enable Bose loudspeaker EQ

**Blend into any room design** with elegant form factors, minimum-bezel grilles available in black or white, and removable logos

**Reduce installation time** with the patented QuickHold mounting system, which also reduces strain, hassle, and the chance of product damage

**Install easily** — includes Euroblock connectors; plenum-rated backcan, tile-bridge, and front-access audio wiring that makes installation and troubleshooting easier

**Deliver high SPL** for demanding applications

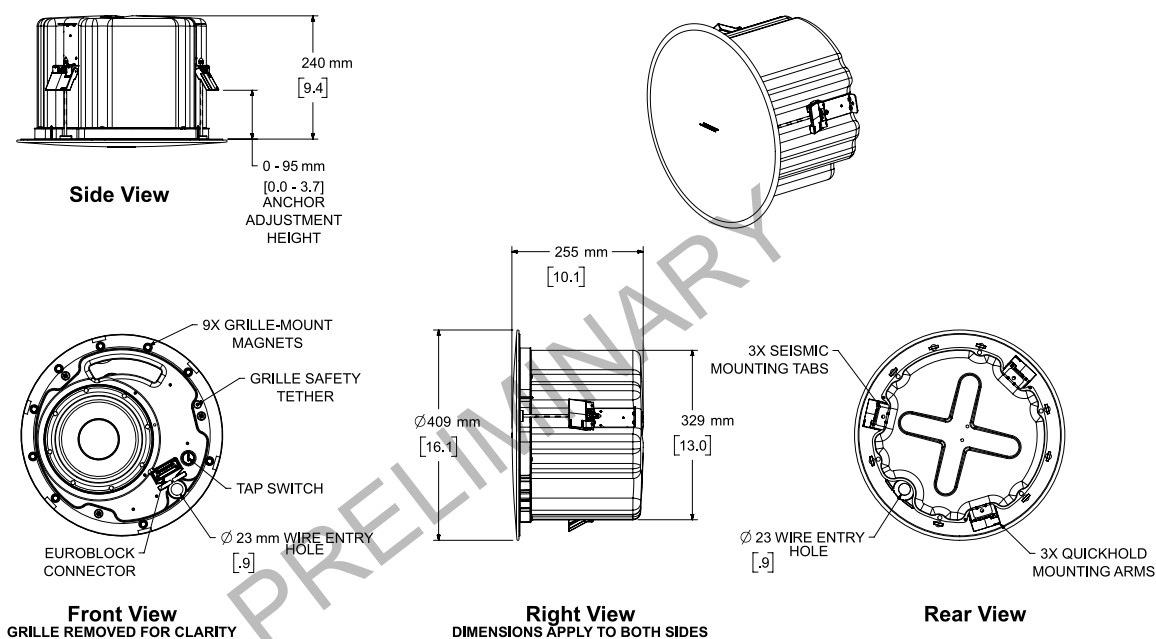
### Technical Specifications

SINGLE LOUDSPEAKER PERFORMANCE		
Frequency Response (-3 dB) <sup>(1)</sup>	50 - 200 Hz	
Frequency Range (-10 dB)	42 - 300 Hz	
Nominal Coverage Angle (H x V)	Omnidirectional below 200 Hz	
	Bose extended-lifecycle test <sup>(4)</sup>	AES component test <sup>(5)</sup>
Power Handling, long-term continuous	150 W	180 W
Power Handling, peak	600 W	720 W
Sensitivity (SPL/ 1W @ 1 m) <sup>(2)</sup>	91 dB	91 dB
Calculated Maximum SPL @ 1 m <sup>(3)</sup>	113 dB	114 dB
Calculated Maximum SPL @ 1 m, peak	119 dB	120 dB
Recommended High-Pass Protection	45 Hz with 24-dB / octave filter	
Recommended Crossover	80 - 200 Hz (via active crossover in DSP)	
Transformer taps	70V: 20, 40, 80, 150 W, bypass 100V: 40, 80, 150 W, bypass	
TRANSDUCERS		
Low Frequency	1 x 8-inch woofer (203 mm)	
Nominal Impedance	8 ohms (transformer bypass)	
PHYSICAL		
Enclosure Material	Engineered-plastics front baffle with integrated steel formed back can	
Grille	Magnetically attached perforated steel, powder-coated finish, paintable, with safety-tether	
Color	Black: Ral 9005, White: Bose Artic White, Paintable	
Environmental / Ingress-Protection	Indoor only	
Safety Agency	UL-1480A, S5591/ UL Listed, in compliance with UL2043 for plenum-space installation, NFPA70 & NFPA90-A, in accordance with IEC60268-5, ROHS, CE compliant	

# DesignMax DM8C-SUB

## in-ceiling subwoofer

Operating Temperature Range	0 to 50 °C (32 °F to 122 °F)
Connectors	Euroblock 6-pin connector with loop-through, front-baffle mounted. Accepts 18 AWG (0.8 mm <sup>2</sup> ) to 14 AWG (2.5 mm <sup>2</sup> ) size wire.
Wire / Conduit Entry	Single top wire entry point, allows for 9.5 mm (3/8 ") conduit
Suspension / Mounting	Three (3) QuickHold, spring-loaded mounting arms plus three (3) safety cable locations
Maximum Ceiling Thickness	76 mm (3.0 in)
Dimensions (H x W x D)	409 x 255 mm (16.1" x 10" )
Backcan Dimensions (Diameter x Depth)	329 x 240 mm (13" x 9.4")
Ceiling Cutout	349 mm (13.75")
Net Weight	TBD
Shipping Weight	TBD
Included Accessories	Adjustable Tile-Bridge, Template
Optional Accessories	Rough-in 6-pack for new construction
<b>PRODUCT CODES</b>	
829380-0110	DM8C-SUB DesignMax DESIGNMAX DM8C-SUB SINGLE BLK
829380-0210	DM8C-SUB DesignMax DESIGNMAX DM8C-SUB SINGLE WHT



## NOTES:

1. DIMENSIONS ARE IN MILLIMETERS OVER INCHES
2. WEIGHT APPROX xx.xkg [xx.xlbs]

## Footnotes

- (1) Frequency response and range measured on-axis in quarter-space (wall/ceiling boundary) environment with recommended EQ
- (2) Sensitivity measured on-axis in quarter-space (wall/ceiling boundary) environment with recommended EQ
- (3) Maximum SPL calculated from sensitivity and power handling specifications, exclusive of power compression.
- (4) Bose extended-lifecycle test using pink noise filtered to meet IEC268-5, 6-dB crest factor, 500-hour duration.
- (5) AES standard 2-hour duration with IEC system noise

For additional specifications and application information, please visit [PRO.BOSE.COM](http://PRO.BOSE.COM).  
Specifications subject to change without notice. 01/2019